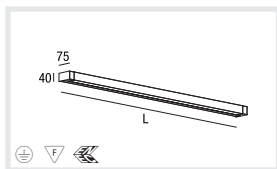


Type



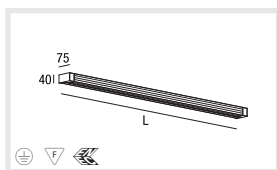
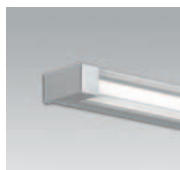
STRETTA OPAL T16 G5 multi EVG

CAPACITY	L (MM)	CODE
1x14/24W	586	040-361##O
1x21/39W	886	040-371##O
1x28/54W	1186	040-381##O
1x35/49/80W	1486	040-391##O

- .5# multi EVG
- .6# multi DIM 1-10V
- .8# multi DIM DALI

D

Leuchtenkörper aus kantigem stranggepresstem Aluminiumprofil
Oberfläche natur eloxiert, weiß oder schwarz pulverbeschichtet
Endabdeckung aus massivem Aluminium in Leuchtenkörperfarbe
Dreiseitig abstrahlende Abdeckung als homogen ausgeleuchtete
satinierete oder klare PMMA-Abdeckung
T16 Variante mit Multi-EVG, optional dimmbar mit 1-10V oder DALI EVG
DALI EVG mit zusätzlicher Touch-DIM Funktion für Tastdimmung
2 Kabelöffnungen und Steckklemme zur Durchgangsverdrahtung



STRETTA CLEAR T16 G5 multi EVG

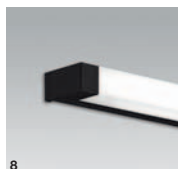
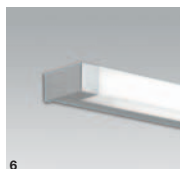
CAPACITY	L (MM)	CODE
1x14/24W	586	040-361##C
1x21/39W	886	040-371##C
1x28/54W	1186	040-381##C
1x35/49/80W	1486	040-391##C

- .5# multi EVG
- .6# multi DIM 1-10V
- .8# multi DIM DALI

E

Housing made of edged, extruded aluminium profile
Surface natural anodised or white or black powder coating
End cap made of solid aluminium in luminaire colour
In 3 directions emitting cover as uniform illuminated,
satin or clear PMMA cover
T16 with multi-ballast, optionally dimmable 1-10V or DALI
DALI ballast with additional touch dimming via push button
2 cable entry points and clamp for through-wiring

Colours



- 040-... 6. anodised alu.
7. white
8. black

I

Corpo in profilo spigoloso in alluminio estruso
Superficie anodizzata naturale o verniciata alle polveri in bianco o nero
Coperchio finale in alluminio massiccio nel colore dell'apparecchio
Coperchio irradiando su 3 lati in PMMA satinato e omogeneamente
illuminato e chiaro
Versione T16 con reattore multi, dimmerabile 1-10V o DALI
Reattore DALI, incl. funzione Touch-DIM per dimm. tramite pulsante
2 entrate di cavo e morsetto a spina per collegamento continuo